

62,89

Wood's Special

Prices for Market Gardeners and Truckers

These prices are for the exclusive use of Market Gardeners and Truckers who, on account of the large quantities of seeds they require, are entitled to these special prices.

Prices quoted effective January 1, 1955, are subject to change without notice. All prices are F.O.B. Richmond, Va. If to be sent by parcel post, postage must be added to the remittance.

TERMS are net cash with the order unless you have an account with us or can give us satisfactory references.

Warranty and Limitation of Liability: All sales of seeds, bulbs and plants are made upon the express condition that in the event they are not true to name and kind as represented at the time of sale, or are not as described on the label or container within recognized tolerances, the liability of the seller is limited in every instance to the purchase price of such seeds, bulbs and plants. Subject to this limitation T. W. Wood & Sons warrants that the seeds, bulbs and plants it sells are as described on the label or container within recognized tolerances. It gives no other warranty, express or implied, and assumes no responsibility as to the crop produced.



A field of Stringless Green Pod Beans at Our Growing Station in Idaho

GARDEN BEANS or SNAPS Bag = 100 lbs. Idaho grown and field inspected by the Idaho Crop Improvement Association, Inc.

GREEN PODDED VARIETIES	25 to 49 lbs.	50 to 99 lbs.	Larger lots
Bountiful or Early Six Weeks	.34	.32	.30
Burpee's Stringless Green Pod	.32	.30	.28
Commodore Dwarf Kentucky Wonder	.51	.49	.47
Contender	.36	.34	.32
Giant Stringless Green Pod	.34	.32	.30
Stringless Black Valentine	.32	.30	.28
Stringless Red Valentine	.34	.32	.30
Sulphur or Brimstone	.36	.34	.32
Stringless Horticultural	.39	.37	.35
Tendergreen Stringless Green Pod	.34	.32	.30
Tenderlong 15	.36	.34	.32
Tennessee Green Pod	.36	.34	.32
Top Crop Stringless Green Pod	.39	.37	.35
Wade	.40	.38	.36
White Half Runner	.44	.42	.40
Red Kidney	.34	.32	.30

WAX PODDED BEANS—Idaho Grown

Bountiful Wax	.34	.32	.30
Cherokee or Valentine Wax	.36	.34	.32
Top Notch Golden Wax	.34	.32	.30
Pencil Pod Black Wax	.34	.32	.30
Surecrop Stringless Wax	.34	.32	.30

BUSH LIMA BEANS

Dixie White Butter Pea	.36	.34	.32
Wood's Prolific Bush Lima	.30	.28	.26
Henderson's Bush Lima	.27	.25	.23
Thorogreen (Green Seeded Henderson)	.30	.28	.26
Jackson Wonder Bush Lima (Speckled)	.30	.28	.26
Fordhook Bush Lima 242	.36	.34	.32
Burpee's Improved Bush Lima	.36	.34	.32

GARDEN BEANS

POLE or CORNFIELD BEANS	25 to 49 lbs.	50 to 99 lbs.	Larger lots
Kentucky Wonder, Brown Seeded	.32	.30	.28
White Kentucky Wonder No. 191	.34	.32	.30
October or Horticultural Wren's Egg	.34	.32	.30
Nancy Davis or Striped Creaseback	.32	.30	.28
Genuine Cornfield	.34	.32	.30
McCaslan	.34	.32	.30
Missouri Wonder	.34	.32	.30
Ideal Market	.34	.32	.30
Kentucky Wonder Wax	.49	.47	.45

POLE LIMA BEANS

Wood's Improved Pole Lima	.30	.28	.26
Small Lima or Sieva	.27	.25	.23
Florida Speckled or Calico Pole Lima	.29	.27	.25
Giant Speckled Pole Lima	.36	.34	.32
Carpinteria Pole Lima	.34	.32	.30
Large White Pole Lima	.34	.32	.30
King of the Garden Lima	.34	.32	.30
Scarlet Runners	.39	.37	.35

GARDEN CORN

EARLY and EXTRA EARLY VARIETIES	Bags = 100 lbs.	25 to 49 lbs.	50 to 99 lbs.	Larger lots
Bland's Extra Early	.24	.22	.20	
Extra Early Adams	.24	.22	.20	
Ideal or Big Early Adams	.22	.20	.18	
Trucker's Favorite	.20	.18	.16	
Norfolk Market	.20	.18	.16	
Wood's Hybrid Trucker's Favorite	.34	.32	.30	

SWEET or SUGAR VARIETIES—Bags = 100 lbs.

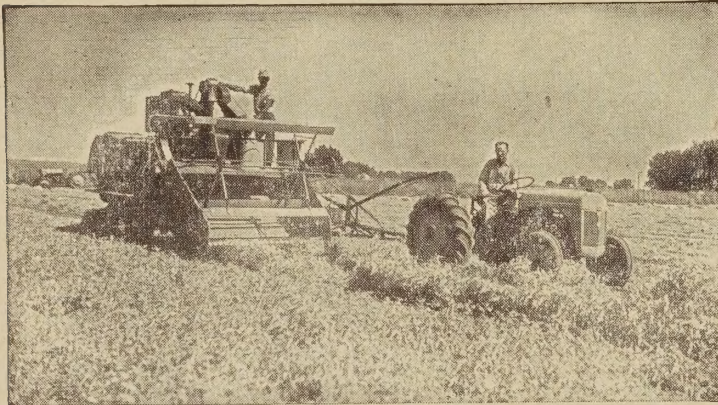
HYBRID CORNS	25 to 49 lbs.	50 to 99 lbs.	Larger lots
Hybrid Stowell's Evergreen	.49	.47	.45
Aristogold Bantam Evergreen	.54	.52	.50
Icana Hybrid	.40	.38	.36
Golden Cross Bantam Hybrid	.40	.38	.36
Iochief Hybrid	.54	.52	.50

OPEN POLLINATED

Golden or Bantam Evergreen	.28	.26	.24
Golden Bantam	.28	.26	.24
Golden Giant	.28	.26	.24
Black Mexican	.30	.28	.26
Country Gentleman	.28	.26	.24
Stowell's Evergreen	.28	.26	.24

POP CORN

Purdue 31 Hybrid	.64	.62	.60
White Rice	.29	.27	.25
South American	.29	.27	.25



Harvesting a field of Thomas Laxton Peas at our Growing Station in Idaho

GARDEN PEAS Bags = 100 lbs. 25 to 49 lbs. 50 to 99 lbs. Larger lots

SMOOTH SEEDED VARIETIES

Wood's Pedigree Extra Early	.22	.20	.18
First and Best	.22	.20	.18
Extra Early Alaska Wilt-Resistant	.21	.19	.17
Large Podded Alaska (Ameer)	.31	.29	.27
Large White Marrowfat	.28	.26	.24
Early Bird or Laxton's Superb	.34	.32	.30

WRINKLE SEEDED EARLY

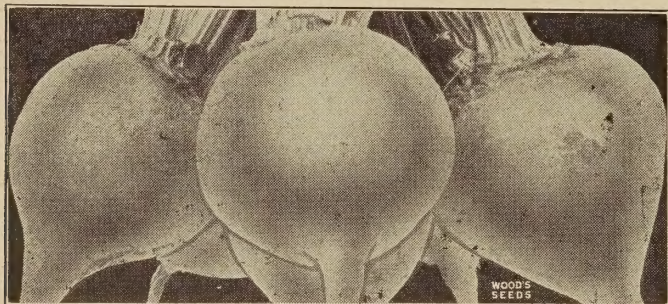
Thomas Laxton	.29	.27	.25
Laxton's Progress	.36	.34	.32
Laxtonian or Hundredfold	.36	.34	.32
Little Marvel	.32	.30	.28
Nott's Excelsior	.30	.28	.26
Premium Gem or McLean's Little Gem	.30	.28	.26
American Wonder	.30	.28	.26

WRINKLE SEEDED, LATE

Bliss Everbearing	.30	.28	.26
Dwarf Telephone or Daisy	.32	.30	.28
Alderman	.30	.28	.26
Dark Green Telephone (Tall)	.30	.28	.26
Champion of England	.30	.28	.26

SUGAR or EDIBLE PODDED

Wood's Mammoth Luscious Sugar	.32	.30	.28
Dwarf Gray Sugar	.34	.32	.30



BEETS

	2 to 4-lb. Lots	5 to 9-lb. Lots	Larger Lots
Crosby's Egyptian	1.20	1.15	1.10
Detroit Dark Red	1.20	1.15	1.10
Wood's Early Wonder	1.15	1.10	1.05
Wood's Crimson Globe	1.15	1.10	1.05
Improved Early Blood	1.15	1.10	1.05
Extra Early Egyptian	1.20	1.15	1.10
Swiss Chard or Spinach Beet	1.05	1.00	.95

STOCK BEETS or MANGELS

Mammoth Prize Long Red	.85	.80	.75
Silesian Sugar	.85	.80	.75
Golden Tankard	.85	.80	.75

ASPARAGUS

	1 to 4-lb. Lots	5 to 9-lb. Lots	Larger Lots
Washington Rust Resistant	\$1.65	\$1.60	\$1.50

ASPARAGUS ROOTS—Washington: 1-year-old roots, \$21.00 per 1,000.

BROCCOLI

Italian Salad	1.15	1.10	1.05
Calabrese Green Sprouting	2.15	2.05	1.95

BRUSSELS SPROUTS—Long Island. 4.00 3.90 3.85



CABBAGE

EARLY VARIETIES

	2 to 4-lb. Lots	5 to 9-lb. Lots	Larger Lots
Copenhagen Market	2.10	2.00	1.95
Selected Early Jersey Wakefield	2.00	1.90	1.85
Charleston Wakefield	2.00	1.90	1.85

EARLY and SECOND EARLY VARIETIES

Ferry's Round Dutch	3.00	2.90	2.85
Early Flat Dutch	2.00	1.90	1.85
All Head Early	2.00	1.90	1.85
All Season	2.00	1.90	1.85

LATE or WINTER VARIETIES

Surehead	2.00	1.90	1.85
Large Late Drumhead	2.00	1.90	1.85
Large Late Flat Dutch	2.00	1.90	1.85
Wood's P. H. Late Flat Dutch	2.00	1.90	1.85
Short Stem Danish Ballhead	3.00	2.90	2.85
Chieftain Savoy	2.40	2.30	2.25
Mammoth Rock Red	3.00	2.90	2.85

YELLOWS RESISTANT VARIETIES

Marion Market	2.30	2.20	2.15
Wisconsin All Season	2.60	2.50	2.45
Wisconsin Hollander	3.50	3.40	3.35

CHINESE PETAISAI—Wong Bok 1.50 1.40 1.35

CARROT

	2 to 4-lb. Lots	5 to 9-lb. Lots	Larger Lots
Wood's Scarlet Intermediate	1.65	1.60	1.55
Nantes Improved Coreless	1.60	1.55	1.50
Half Long Danvers	1.35	1.30	1.25
Red Cored Chantenay	1.35	1.30	1.25
Imperator	1.45	1.40	1.35
Improved Long Orange	1.45	1.40	1.35

CAULIFLOWER

	Oz.	¼-lb.	1 to 4 lbs.
Danish Giant (Dry Weather)	1.00	3.50	12.00
Earliest Snowball	1.00	3.50	12.00

CELERY

	1 to 4-lb. Lots	5 to 9-lb. Lots	Larger Lots
Giant Pascal	3.90	3.70	3.60
Improved White Plume	5.30	5.10	5.00
Golden Self Blanching	5.00	4.80	4.70

CELERIAC—Large Smooth Prague.. 4.50 4.30 4.15

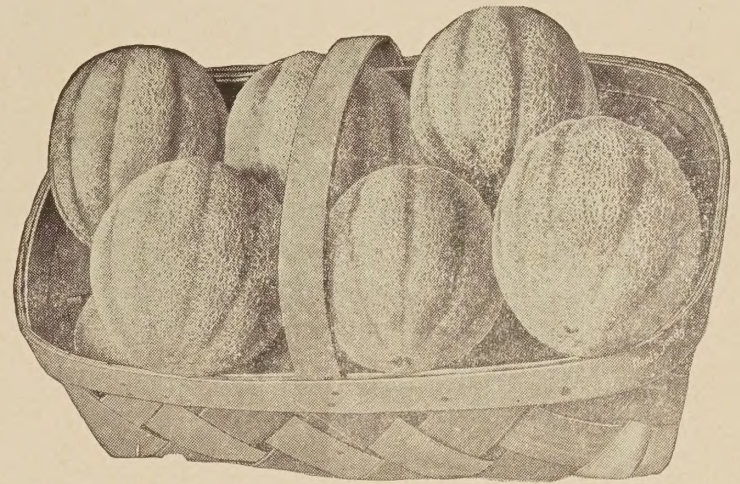
COLLARDS

	2 to 4-lb. Lots	5 to 9-lb. Lots	Larger Lots
Carolina Header	\$2.50	\$2.40	\$2.35
Vates	1.50	1.45	1.40
North Carolina Short Stem	1.15	1.10	1.05
White or Cabbage	1.10	1.05	1.00
Georgia or Southern	1.05	1.00	.95

CORN SALAD	1.90	1.85	1.80
-------------------------	------	------	------

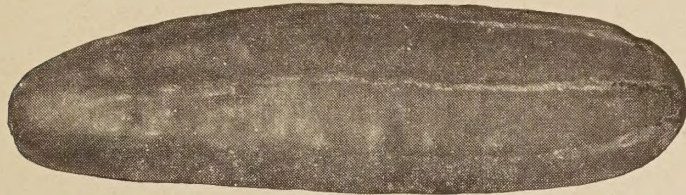
CRESS

Water	6.50	6.25
Curled or Pepper Grass	1.00	.95	.90
Upland Cress	1.90	1.80	1.75



CANTALOUPE or MUSKMELLON

	2 to 4-lb. Lots	5 to 9-lb. Lots	Larger Lots
Wood's Perfection	\$2.00	\$1.95	\$1.90
Extra Early Hanover	2.15	2.10	2.05
Wood's Early Rocky Ford	2.00	1.95	1.90
Rocky Ford Netted Gem	1.75	1.70	1.65
Improved Rocky Ford, Jr.	2.15	2.10	2.05
Early Knight	2.00	1.95	1.90
Pride of Wisconsin	1.85	1.80	1.75
Hearts of Gold	1.85	1.80	1.75
Hale's Best No. 36	1.80	1.75	1.70
Hale's Best, Jumbo Strain	1.80	1.75	1.70
Gold Lined Rocky Ford	1.80	1.75	1.70
Long John	2.25	2.20	2.15
Large Hackensack or Turk's Cap.	2.00	1.95	1.90
Hollybrook Luscious	2.40	2.30	2.25
Banana	1.80	1.75	1.70
Honey Dew	1.85	1.80	1.75
Glass or Mango, for preserves & pickle	2.00	1.95	1.90



CUCUMBER

	2 to 4-lb. Lots	5 to 9-lb. Lots	Larger Lots
Early Surecrop Hybrid, Oz. \$3.00; ¼ lb. \$10.00; \$35.00 lb.			
Wood's Earligreen	2.00	1.95	1.90
Santee	2.40	2.35	2.30
Straight 8	1.85	1.80	1.75
Early White Spine	1.50	1.45	1.40
Early Fortune	1.50	1.45	1.40
Improved Long Green	1.90	1.85	1.80
A & C or Colorado	1.85	1.80	1.75
Palmetto	2.50	2.45	2.40
Marketer	2.00	1.95	1.90
White Wonder	1.85	1.80	1.75
Green Prolific or Early Short Stem..	1.60	1.55	1.50
Early Green Cluster	1.50	1.45	1.40
Boston Pickling	1.50	1.45	1.40
National Pickling	1.50	1.45	1.40
Gherkin or Burr, for pickles	2.25	2.20	2.15

EGG PLANT

Black Beauty	5.00	4.90	4.80
Florida High Bush	5.20	5.10	5.00

ENDIVE

Green Curled	1.40	1.30	1.25
--------------------	------	------	------

HORSE RADISH ROOTS—50¢ per dozen; 50 for \$1.25; \$2.00 per 100.

KALE or BORECOLE

	2 to 4-lb. Lots	5 to 9-lb. Lots	Larger Lots
Early Curled Siberian	1.10	1.05	1.00
Dwarf Blue Curled Scotch	1.50	1.45	1.40
Spring Kale or Spring Sprouts40	.38	.37

KOHL RABI , Early White Vienna....	2.00	1.90	1.85
---	------	------	------

LEEK —Large Flag	3.75	3.65	3.55
-------------------------------	------	------	------

LETTUCE

	2 to 4-lb. Lots	5 to 9-lb. Lots	Larger Lots
HEADING VARIETIES			
Wood's Cabbage	1.90	1.85	1.80
Improved Big Boston	1.80	1.75	1.70
Great Lakes	4.35	4.30	4.25
Iceberg	2.00	1.90	1.85
Imperial No. 44	3.00	2.95	2.90
Summer Allheart	1.70	1.65	1.60
LOOSELEAF VARIETIES			
Slobolt	3.00	2.95	2.90
Salad Bowl	4.65	4.55	4.50
Early Curled Simpson or Silecia....	1.70	1.65	1.60
Black Seeded Simpson	1.70	1.65	1.60
Grand Rapids	1.70	1.65	1.60
Crisp as Ice	2.90	2.85	2.80
Cos or Romaine, dark green	1.90	1.85	1.80
Chicken Lettuce	1.55	1.50	1.45

WATERMELON

New Hampshire Midget	2.25	2.20	2.15
Congo 46-40	2.55	2.50	2.45
Congo, Certified	3.00	2.95	2.90
Improved Kleckley's Sweet	1.40	1.35	1.30
Stone Mountain	1.40	1.35	1.30
Florida Favorite	1.40	1.35	1.30
Tom Watson	1.40	1.35	1.30
Improved Ga. or Aug. Rattlesnake...	1.40	1.35	1.30
Florida Giant or Cannonball	1.55	1.50	1.45
Garrison or Darlington	2.15	2.10	2.05
Preserving Citron	1.45	1.40	1.35

WILT-RESISTANT VARIETIES

Fairfax Wilt and Anthracnose Resist.	2.85	2.80	2.75
Dixie or Cuban Queen Wilt Resistant	2.25	2.20	2.15
Hawkesbury Wilt-Resistant	1.65	1.60	1.55
Leesburg or Wilt-Resistant Kleckley's Sweet	1.65	1.60	1.55
Charleston Gray, Wilt-Resistant ...	4.50	4.45	4.40
Charleston Gray, Wilt-Resist. Certified	5.00	4.95	4.90

MUSTARD

Southern Giant Curled, Long Standing	1.00	.95	.91
Florida Broad Leaved	1.15	1.10	1.05
Chinese Broad Leaved	1.15	1.10	1.05
Fordhook Fancy	1.00	.95	.91
Tendergreen or Mustard Spinach90	.85	.81
Old Fashion—Crop Failed.			

OKRA or GUMBO

Clemson Spineless	1.50	1.45	1.40
White Velvet	1.25	1.20	1.15
Dwarf Stalk Long Green	1.25	1.20	1.15
Perkin's Mammoth Long Green	1.25	1.20	1.15

ONION SEED

	2 to 4-lb. Lots	5 to 9-lb. Lots	Larger Lots
Yellow Globe Danvers	\$3.00	\$2.90	\$2.85
Silver Skin or White Portugal	3.30	3.20	3.15
Prize Taker or Spanish King	3.50	3.40	3.35
Yellow Valencia Sweet Spanish	3.50	3.40	3.35
Extra Early White Pearl	4.25	4.15	4.10

PARSLEY

	2 to 4-lb. Lots	5 to 9-lb. Lots	Larger Lots
Plain or Single	1.25	1.20	1.15
Champion Moss Curled	2.00	1.95	1.90

PARSNIP

	2 to 4-lb. Lots	5 to 9-lb. Lots	Larger Lots
Sugar or Hollow Crown	1.35	1.30	1.25

PEPPER

	2 to 4-lb. Lots	5 to 9-lb. Lots	Larger Lots
Yolo Wonder	7.50	7.35	7.30
California Wonder	5.50	5.40	5.35
Florida Giant	5.50	5.40	5.35
Large Sweet Bull Nose	4.50	4.40	4.35
Ruby Giant or World Beater	4.60	4.50	4.45
Ruby King	4.60	4.50	4.45
Pimento	6.00	5.90	5.85
Red Chili	3.90	3.80	3.75
Long Red Cayenne	5.00	4.90	4.85

PUMPKIN

	2 to 4-lb. Lots	5 to 9-lb. Lots	Larger Lots
Virginia Mammoth	1.50	1.45	1.40
Sugar or Pie Pumpkin	1.35	1.30	1.25
Cashaw or Crookneck (Green Striped)	1.35	1.30	1.25
Tennessee Sweet Potato	1.55	1.50	1.45
King of the Mammoths	1.65	1.60	1.55
Large Sweet Cheese	1.20	1.15	1.10
Corn Field Pumpkin	1.10	1.05	1.00

RADISH

TURNIP SHAPED

	2 to 4-lb. Lots	5 to 9-lb. Lots	Larger Lots
Early Red or Scarlet Turnip85	.80	.75
French Breakfast85	.80	.75
Early White Tipped Scarlet (Sparkler)85	.80	.75
Extra Early Scarlet Globe85	.80	.75

LONG RADISHES

	2 to 4-lb. Lots	5 to 9-lb. Lots	Larger Lots
Long Scarlet Summer85	.80	.75
Long White Icicle85	.80	.75
Brightest Long Scarlet85	.80	.75

WINTER VARIETIES

	2 to 4-lb. Lots	5 to 9-lb. Lots	Larger Lots
Rose China Winter	1.10	1.05	1.00
Long Black Spanish	1.10	1.05	1.00
Chinese or Celestial	1.10	1.05	1.00

RHUBARB or Pie Plant	2.25	2.15	2.10
-----------------------------------	------	------	------

RHUBARB ROOTS—35c. each; \$2.50 per dozen.

SALSIFY

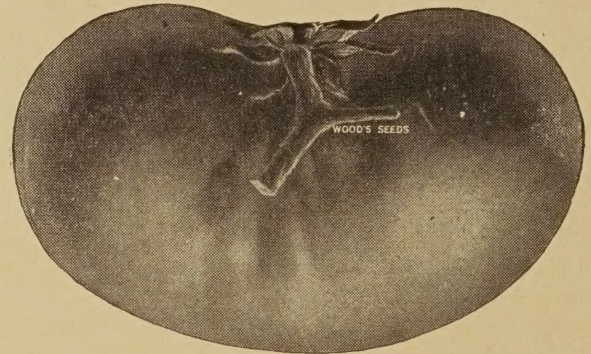
Mammoth Sandwich Island	3.25	3.15	3.10
-------------------------------	------	------	------

SPINACH

	2 to 4-lb. Lots	5 to 9-lb. Lots	Larger Lots
New Zealand90	.85	.80
Norfolk Savoy or Bloomsdale60	.55	.50
Long Standing Blcomsdale Savoy....	.62	.57	.52
Virginia Blight Resistant62	.57	.52

SQUASH or CYMLING

	2 to 4-lb. Lots	5 to 9-lb. Lots	Larger Lots
Wood's Earliest Prolific	1.40	1.35	1.30
Early White Bush or Patty Pan.....	1.20	1.15	1.10
Mammoth White Bush	1.25	1.20	1.15
Early Golden Bush	1.20	1.15	1.10
Golden Summer Crookneck	1.20	1.15	1.10
Early Summer Straightneck	1.25	1.20	1.15
Cocozelle or Itallian Marrow	1.20	1.15	1.10
Warted Hubbard (Winter)	1.55	1.50	1.45
Table Queen or Acorn	1.25	1.20	1.15



Wood's Famous Brimmer Tomato

TOMATO

	2 to 4-lb. Lots	5 to 9-lb. Lots	Larger Lots
Stokescross No. 4 Hybrid, Oz. \$2.00; ¼ lb. \$5.00; lb., \$15.00			
Marglobe, Wilt-Resistant, Certified ...	5.75	5.45	5.30
Marglobe, Wilt-Resistant	5.25	4.90	4.75
Rutgers, Wilt-Resistant, Certified ...	4.50	4.25	4.10
Rutgers, Wilt-Resistant	4.10	3.70	3.55
Break O'Day	5.70	5.40	5.30
Oxheart	13.00	12.70	12.60
Southland	5.90	5.60	5.45
Spark's Earliana	5.85	5.55	5.45
Bonnie Best	4.50	4.25	4.15
Chalk's Early Jewel	4.50	4.25	4.15
June Pink	6.50	6.25	6.20
Wood's Improved Ponderosa	8.50	8.25	8.20
Wood's Famous Brimmer	10.00	9.75	9.60
Stone	3.20	2.95	2.85
Greater Baltimore	3.20	2.95	2.85
Golden Ponderosa	10.75	10.55	10.45
Yellow Plum	7.75	7.55	7.45
Yellow Pear	7.75	7.55	7.45

TURNIP

	2 to 4-lb. Lots	5 to 9-lb. Lots	Larger Lots
Extra Early White Milan95	.92	.90
Extra Early Purple Top Milan95	.92	.90
Mammoth Purple Top White Globe....	.65	.62	.60
Improved Purple Top White Globe...	.70	.67	.65
Early Red or Purple Top Strapleaf...	.65	.62	.60
Large White Norfolk Globe65	.62	.60
Pomeranian White Globe65	.62	.60
Long White Cowhorn65	.62	.60
White Egg65	.62	.60
Purple Top Yellow Aberdeen65	.62	.60
Amber or Yellow Globe65	.62	.60
Golden Ball or Orange Jelly65	.62	.60

SALAD VARIETIES

Seven Top60	.57	.55
Southern Prize60	.57	.55
Shogoin65	.62	.60

RUTABAGA or SWEDE

Improved Purple Top Yellow70	.67	.65
American Purple Top Yellow65	.62	.60